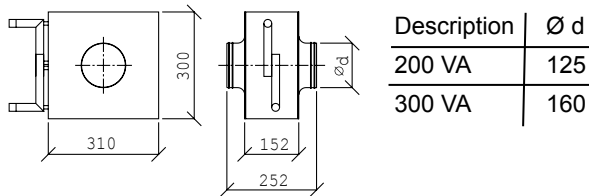


Water heating element for

GES Energy 1
GE Energy 1
GE MINI-C

GEU 390 AC
GEU 590 AC

200VA/300VA is suitable for heating the fresh air.



Description	Ø d
200 VA	125
300 VA	160

2 pipe rows, duct connection (coupling connector) with rubber ring seal.

Water connection: 1/2" RG

Room temperature control:

Fresh air 12 °C – Water 70/40 °C – 2 pipe rows

Air flow m ³ /h	Heating performance kW	Fresh air outlet °C	Water flow l/h	Water pressure loss kPa
100	1,00	41	28	0,06
150	1,29	37	37	0,10
200	1,54	34	44	0,14
250	1,76	32	51	0,18
300	1,95	31	56	0,21

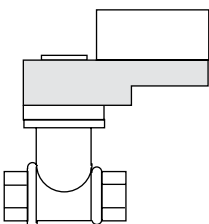
Fresh air 12 °C – Water 50/35 °C – 2 pipe rows

Air flow m ³ /h	Heating performance kW	Fresh air outlet °C	Water flow l/h	Water pressure loss kPa
100	0,73	34	42	0,13
150	0,96	31	55	0,22
200	1,15	29	66	0,30
250	1,31	27	75	0,39
300	1,47	26	84	0,47

Motorized valve

A motorized valve is suitable for units with water heating element for controlling the supply air or room temperature. The temperature can be adjusted on the control panel.

Water connection: 1/2" RG pipe thread



Electrical connection 24 V AC

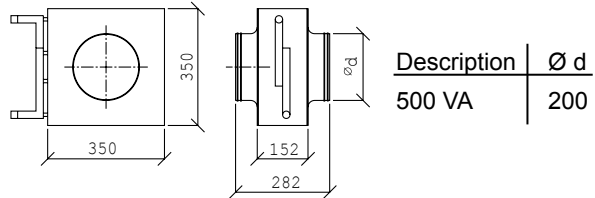
Output: 0-10 V

Water heating element for

GE Energy 2
GE Premium 2

GE MIDI-C

500VA is suitable for heating the fresh air.



Description	Ø d
500 VA	200

2 pipe rows, duct connection (coupling connector) with rubber ring seal.

Water connection: 1/2" RG

Room temperature control:

Fresh air 12 °C – Water 70/40 °C – 2 pipe rows

Air flow m ³ /h	Heating performance kW	Fresh air outlet °C	Water flow l/h	Water pressure loss kPa
200	1,82	39	52	0,21
300	2,34	35	67	0,34
400	2,76	32	79	0,46
500	3,14	30	90	0,58

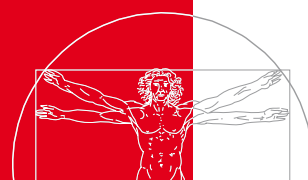
Fresh air 12 °C – Water 50/35 °C – 2 pipe rows

Air flow m ³ /h	Heating performance kW	Fresh air outlet °C	Water flow l/h	Water pressure loss kPa
200	1,33	32	76	0,45
300	1,72	29	98	0,72
400	2,05	27	118	0,98
500	2,34	26	134	1,24

Sommerbox - (Bypass)

The units GE Energy 1 & 2, GES Energy 1, GES Premium 1 & 2 can be delivered with a sommerbox. The sommerbox can replace the counter current heat exchanger during summer.

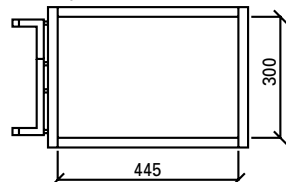
If you want an automatic modulating bypass, you can replace the back panel of the units GE Energy 1 & 2 with a bypass module.



Water heating element for

GE Energy 3

Can be supplied with a built-in water heating element for the supply air.



800 VA

2 pipe rows, integrated

Water connection: 1/2" RG pipe thread

Room temperature control:

Fresh air 12 °C – Water 70/40 °C – 2 pipe rows

Air flow m ³ /h	Heating performance kW	Fresh air flow °C	Water amount l/h	Water pressure loss kPa
400	3,2	36	92	0,09
500	3,6	34	103	0,12
600	4,0	32	115	0,14
700	4,4	31	126	0,17
800	4,8	30	138	0,19

Fresh air 12 °C – Water 50/35 °C – 2 pipe rows

Air flow m ³ /h	Heating performance kW	Fresh air outlet °C	Water flow l/h	Water pressure loss kPa
400	2,4	29	138	0,20
500	2,7	28	155	0,26
600	3,0	27	172	0,32
700	3,3	26	192	0,38
800	3,6	25	207	0,43

Electrical reheating element for

GES Energy 1
GE Energy 1 & 2
GE MINI-C
GE Premium 2

GEMINI-C
GEU 390 AC
GEU 590 AC

Can be delivered with an electrical reheating element for the supply air.

Duct connection (muff connection size).

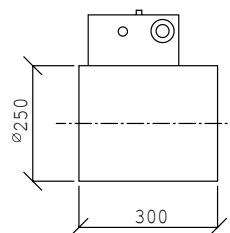
Electrical connection between the unit and the electrical reheating element 1 x 230 V + N + PE

Electrical reheating element for

GE Energy 3

Electrical reheating element is suitable for heating the supply air.

Size in mm

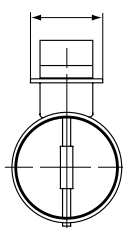
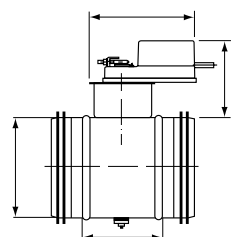


Ø250 mm duct (muff connection size)

	Ø d	Watt
PTC Electrical reheating element (016002)	100	1000
PTC Electrical reheating element (016003)	125	1000
PTC Electrical reheating element (016004)	160	1000

Motorized damper

We can supply fresh air and extract air motorized damper.



Name	Ø d
200 SP	125
300 SP	160
500 SP	200
800 SP	250

Fresh air damper with spring return motor 230 V

Fresh air damper with motor 230 V

Extract air damper with motor 230 V