



# GEU 390 AC

## Description

GEU 390 AC is a heat recovery ventilation unit equipped with counter-current heat exchanger, supply and extract fan, F7 supply filter, G4 extract filter, Optima 250 automatics and control panel.

GEU 390 AC can be delivered with the following:

- Water- or electrical heating surface for Ø125 mm duct
- Fresh air damper with spring return motor for Ø125 mm duct
- Fresh air damper with motor for Ø125 mm duct
- Exhaust damper with motor for Ø125 mm duct
- Thermostat valve or motor valve

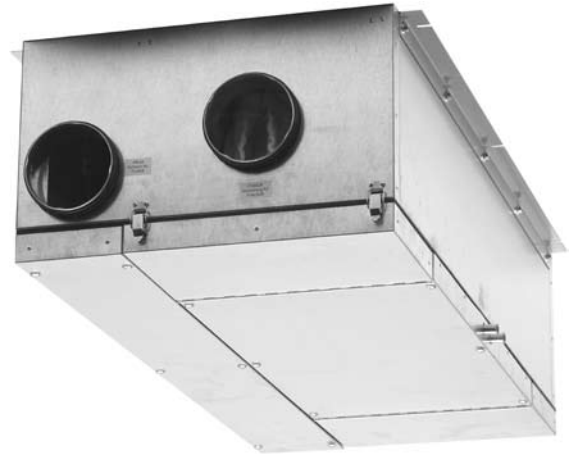


## Suitability

GEU 390 AC is used for domestic ventilation systems where balanced ventilation and heat recovery is needed.

## Types

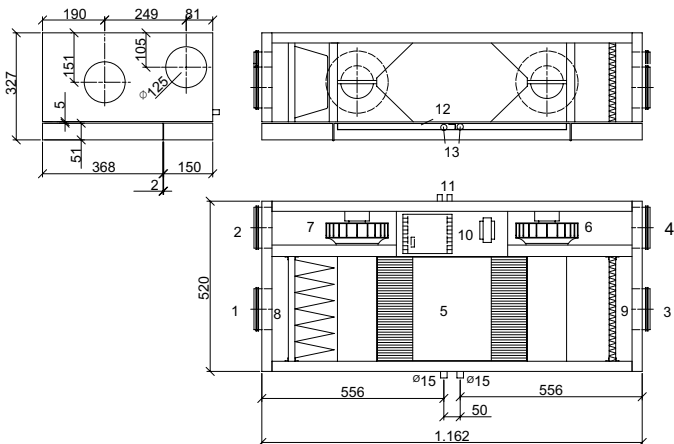
It is possible to obtain the GEU 390 AC in right- hand left-hand version.



## Dimensions

GEU 390 AC

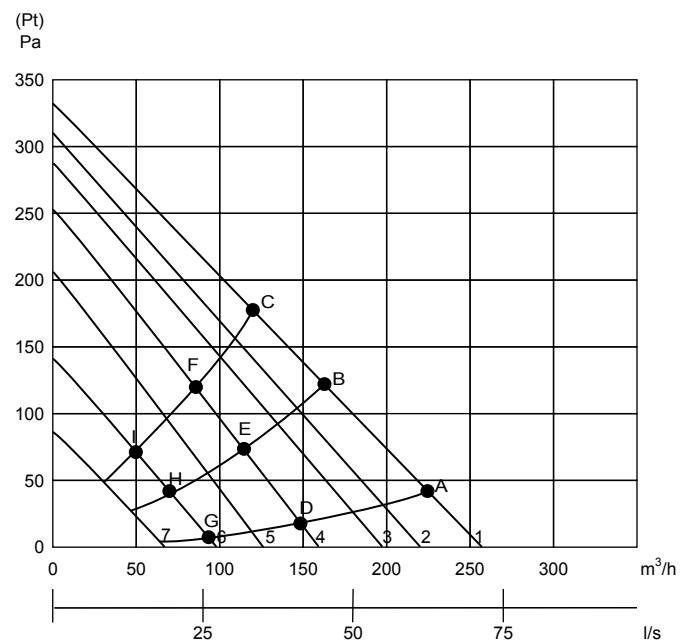
Dimensions in mm



- |                                   |                        |
|-----------------------------------|------------------------|
| 1: Fresh air (outdoor air)        | 7: Extract fan         |
| 2: Exhaust                        | 8: Fresh air filter F7 |
| 3: Extract                        | 9: Extract filter G4   |
| 4: Supply                         | 10: Electrical box     |
| 5: Counter current heat exchanger | 11: Wire passage       |
| 6: Supply fan                     | 12: Condensation tub   |
|                                   | 13: Condensation drain |

## Output

The performance diagram shows the pressure ( $P_t$ ) available for the duct system on both extract and supply. Pressure loss in the unit has been deducted.



Curves: 1: 100% 2: 75% 3: 60% 4: 50%  
5: 40% 6: 30% 7: 20%

Power input (per ventilator)

	A	B	C	D	E	F	G	H	I
Watt	59	58	57	43	41	40	21	20	20

# GEU 390 AC



## Technical data

### Power supply

1 x 230 V + N + PE, 10 A, 50 Hz

### Fans

R2E 190 (AC)

### Condenser

2 µF

### Isolation class

B

### Protection class

IP 44

### Motor capacity (Max. per motor)

#### Rpm

2500 at 50Hz

### Current input (Max. per motor)

58W

### Power consumption (Max. per motor)

0.26A

Individually, the fans may be set to 3 different speeds.

## Construction

### Main dimensions:

(h x l x d) ex. connecting pieces  
327 x 1162 x 520 mm

### Cabinet:

Fully closed hot galvanised plate with 30 mm Isolation.

### Duct connection:

Ø125 mm with rubber ring seal

### Front:

Cover with Ø6 mm screws and snap bolts on the filter cover

### Conter current heat exchanger:

Seawater resistant aluminium

### Condensation tub:

Stainless steel

### Condesation drain:

Ø15 mm stainless steel

### Filters:

#### Supply:

F7 filter

#### Extract:

G4 filter

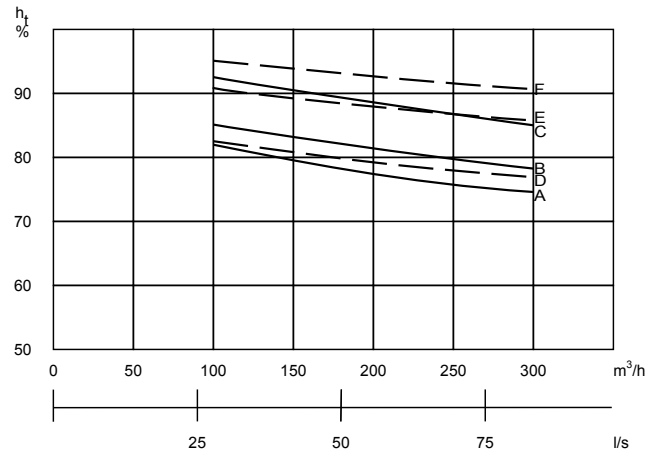
### Weight:

40 kg

## Automatics

GE 590 AC is delivered with Optima 250 DESIGN automatics and display.

## Temperature efficiency



Temperature efficiency. Air flow $m_{in} = m_{out}$							
		A	B	C	D	E	F
Extract	°C	20	20	20	20	20	20
Relative humidity	%	30	50	70	30	50	70
Outdoor air	°C	4	4	4	-12	-12	-12

Icing up of the heat exchanger at low outdoor temperatures has not been taken into account.

## Sound data

Measuring point	1 m in front of the unit			Extract duct			Supply duct		
	1	2	3	1	2	3	1	2	3
Airflow									
	Lo dB			Lwu dB			Lwi dB		
63 Hz	36	44	47	71	83	88	71	83	88
125 Hz	36	41	45	69	78	85	69	78	85
250 Hz	30	38	44	63	74	81	63	74	81
500 Hz	23	31	39	55	69	76	55	69	76
1000 Hz	-	22	30	50	63	71	50	63	71
2000 Hz	-	-	21	42	59	68	42	59	68
4000 Hz	-	-	-	30	50	61	30	50	61
8000 Hz	-	-	-	24	38	51	24	48	51
Average	Lo dB(A)			Lwu dB(A)			Lwi dB(A)		
	26	33	39	58	70	78	58	70	78

- 1: Measured at 30% and an airflow of 90 m³/h
- 2: Measured at 50% and an airflow of 150 m³/h
- 3: Measured at 100% and an airflow of 240 m³/h